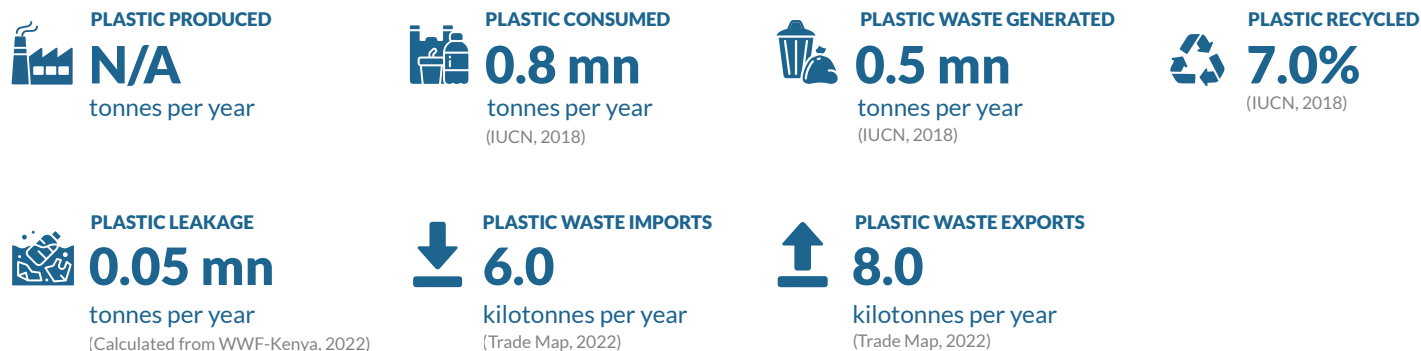




This country fact sheet presents the plastic material flow, policy, and investment landscapes, offering quick and easy access to a one-stop resource on tackling plastic pollution.

PLASTIC MATERIAL FLOW

This section provides an overview of the plastic material flow within the country, offering a snapshot of the plastic waste landscape.



POLICIES

This section highlights selected policies impacting plastic pollution in the country. Details on the status of development of the policy where relevant are also provided.

UPSTREAM

- **Tax on Single-Use Virgin Plastics**
- **Ban on Single-Use Plastics**
Ban on the use, manufacture and importation of all plastic bags used for commercial and household packaging
(Kenya Law, 2017)

MIDSTREAM

- **Deposit Return System Legislation**

DOWNSTREAM

- **Waste Segregation**
Non-hazardous waste should be segregated into organic and non-organic fractions
(Kenya Law, 2022)
- **Extended Producer Responsibility**
(WWF-Kenya, 2022)
- **Plastic Waste Trade Restrictions**
- **Recycled Content Mandates**
Plastic bags that can be manufactured must include at least 30% total recycled content
(National Environment Management Authority, 2018)
- **Mandatory Recycling Targets**
Under the Sustainable Waste Management Act, a national waste management recycling target is to be recommended
(Kenya Law, 2022)
- **Disposal Bans/ Landfill Taxes**
County governments are to impose landfill fee to incentivise diversion of waste to mixed recovery facilities
(Food and Agriculture Organization, 2019)

■ Implemented ■ In progress ■ Not available



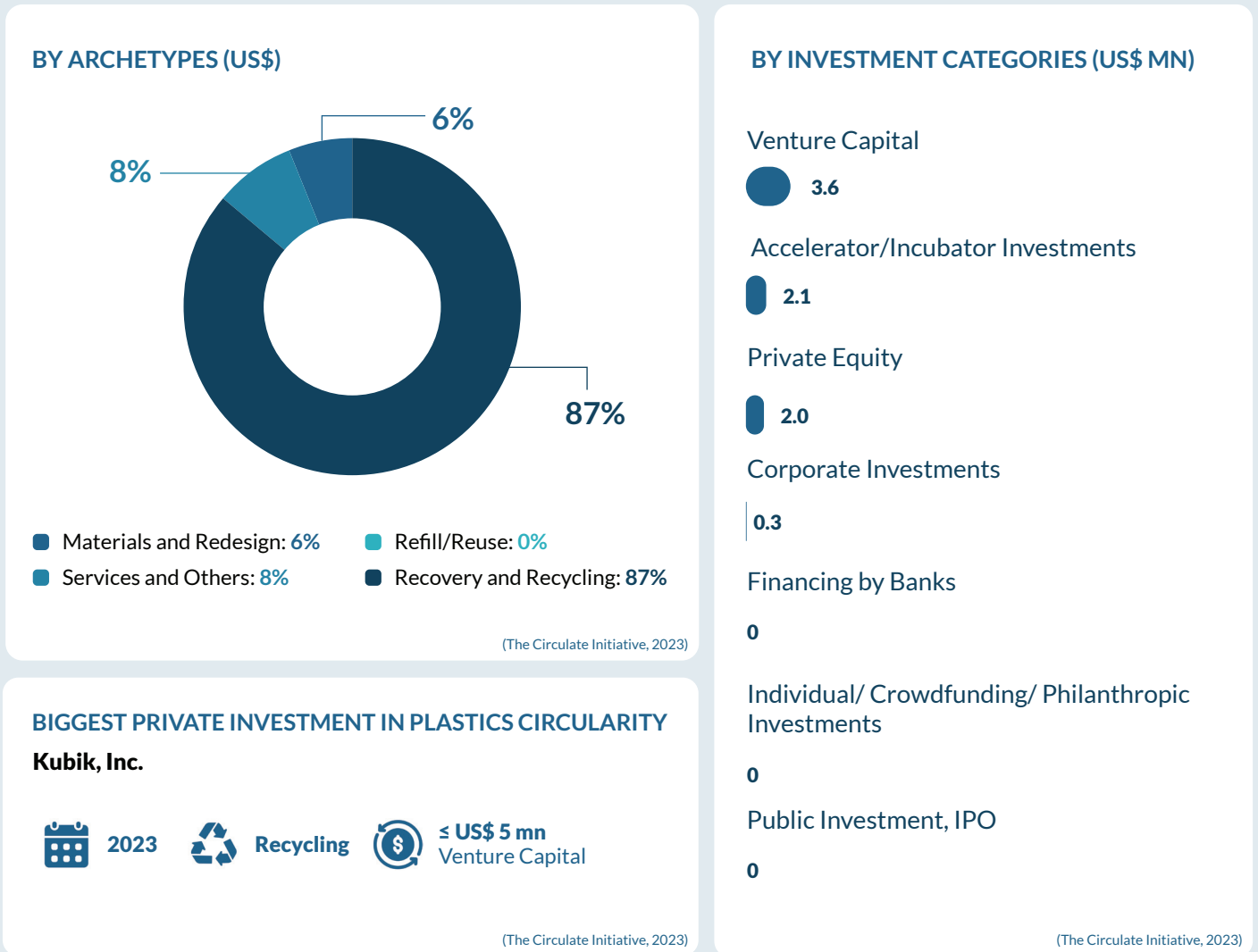
INVESTMENTS

This section provides a summary of public and private investments in waste management, plastic waste management, and plastics circularity. Further breakdown of private investments in plastics circularity solutions by archetypes and investment categories is also provided.

Investments in Waste and Plastic Waste Management (2018 - 2021)



Private Investments in Plastics Circularity (2018 - 6M 2023)



[Glossary and Other References](#)